



EDUCATION FURNITURE CATALOGUE

EDUCATION



Steelcase®

EDUCATION

At Steelcase, insights are core to everything we do.

We study the ways people work and learn, and we collaborate with a global network of research partners including leading universities, research institutes and corporations.

We seek to innovate by understanding the likely evolution of key trends and forces, anticipating the impact of those forces on human behavior and developing insights around emerging social, spatial and informational patterns.

We create value by translating our insights into products, applications and experiences through thoughtful design, which we define as being smart, desirable and viable.

Enclosed is a selection of **education products** and **services** available from POI Business Interiors that can enhance today's learning environments.

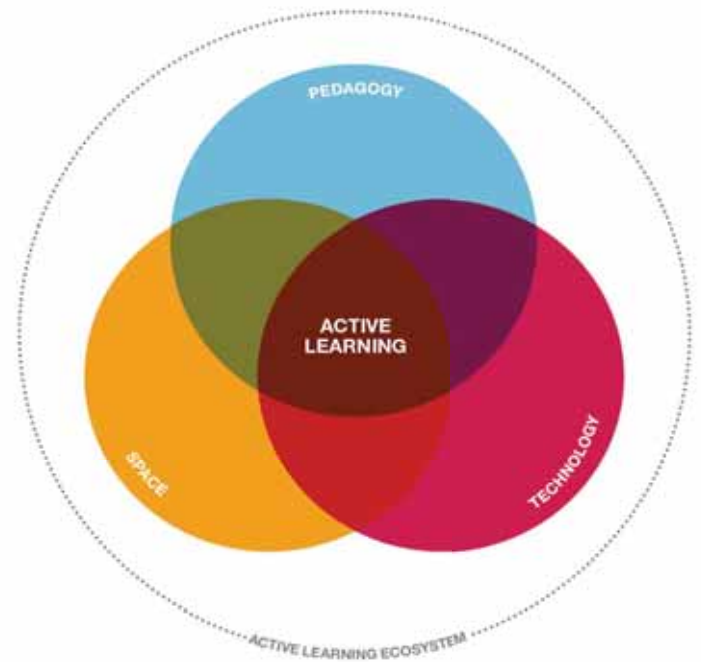
If you would like any more information or have any questions please feel free to contact us at your convenience.

Thank you.

POI Business Interiors Inc.

www.poi.ca

Pedagogy, technology and space, when carefully considered and intentionally designed can establish new protocols for advanced learning environments solutions.



contents

Private Office	5
In-between Spaces	13
Classroom Desks	21
Task Seating	29
Collaborative Seating	35
Whiteboards	47
Technology	53
About POI and Services	59

MULTI-PURPOSE ACADEMIC SPACES

The typical faculty office was designed in a bygone era as a private inner sanctum and repository for printed material. Amid bookshelves and papers stacked high, instructors hunched over student assignments and research papers. When computers arrived, instructors merely stacked stuff higher to make a little room on an already overcrowded desk.

A variety of teaching strategies and new technologies are demanding a new approach to the faculty workspace.

Instructors meet frequently with peers and students—who are often carrying tablet computers and other new digital devices—making it necessary to consider tools such as multiple screens. Running out of room in the office, instructors try to hold private conversations standing up or in the hallway outside their office while everyone nearby can listen. It's no way for collaboration or student mentoring to take place. These offices are often situated along the window wall areas of a double-loaded corridor, which means that a wave of hundreds of students moves through the space at every class change.

An instructor's continual process of teaching, researching and learning is now as much a team sport as an individual effort. Consider the design of a group, or neighborhood, of faculty offices around three core activities: concentration, contemplation and collaboration. Rather than separate areas of the office, these may be fluid zones designed to support a range of activities.



PRIVATE OFFICE





ELECTIVE ELEMENTS





Focused concentration one minute—
impromptu meeting the next. The Elective
Elements private offices elegantly balance
the privacy, visibility and accessibility
leaders need to work effectively and
efficiently. Luxurious finish options
complement layered and open storage
designed to keep both professional tools
and personal items visible and easily
accessible, creating productive yet stylish,
comfortable office spaces.



CURRENCY



From focused to collaborative work, Currency creates privacy without creating boundaries. A choice of open or closed storage units brings style and organization to environments ranging from conservative to progressive and anything in between. Currency's solid construction, modular storage options and laminate materials offer a balance of functionality and style at an affordable price.



AIRTOUCH

Countless studies show that people are healthier and more productive when they can change postures in their workspaces. The innovative Airtouch® mechanism gives workers the ability to adjust their worksurface height quickly, quietly and effortlessly—without the need for electricity—while encouraging frequent workstyle transitions.



EVERY SPACE IS A LEARNING SPACE

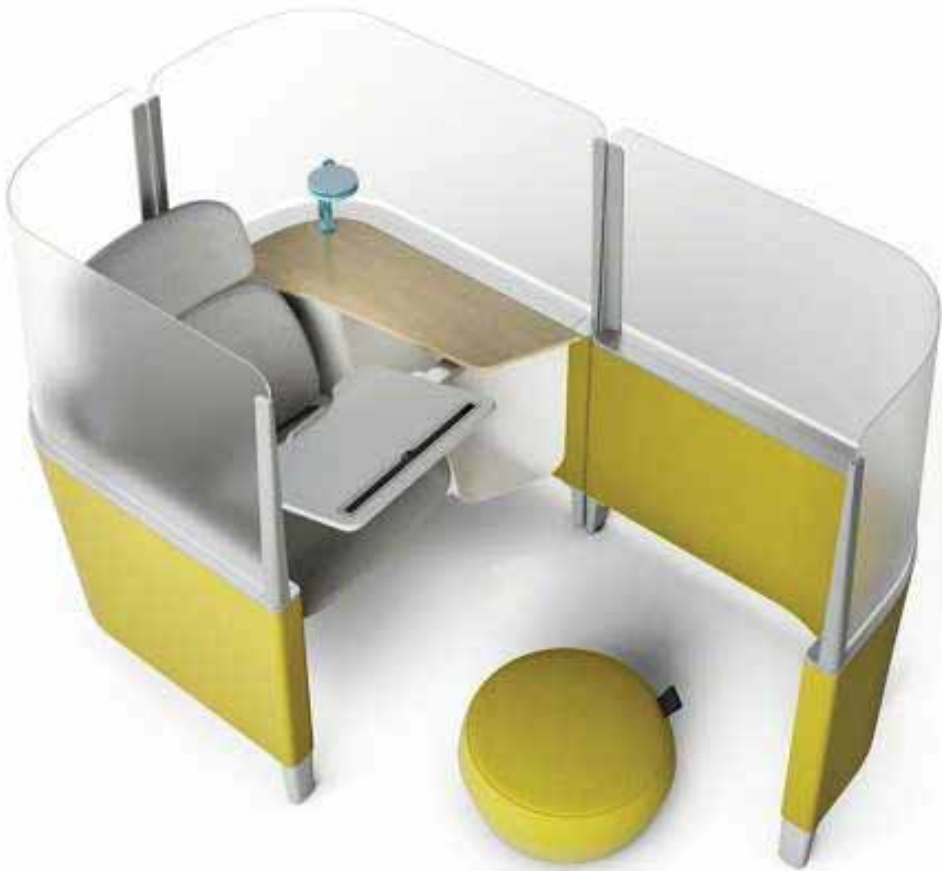
Learning can and should happen everywhere on campus – from the classroom to the library to faculty offices. In between these destination sites are lounges, hallways and other informal areas that can be so much more than transition spaces. They can be flexible, friendly learning spaces for individuals and groups – all smart ways to better leverage valuable campus real estate.

Lounge spaces also should be used as great attractors, spaces where students can meet and work with others and build that most precious of campus commodities: a community. These spaces are remarkable for their energy and activity; even a small lounge area can buzz with the enthusiasm of a small team at work or a few students engaged in animated conversation.

Learning involves a variety of postures: stand-up conversations, groups gathered in discussion, a long project work sessions around a table covered with materials, etc. Students need tools that support collaborative learning both before and after class.



IN-BETWEEN SPACES



BRODY



The Brody WorkLounge creates a comfortable micro-environment by thoughtfully integrating power, ergonomic comfort, personal storage and optional lighting—so students can focus their attention, get into flow and get work done. Brody WorkLounge can help schools, colleges and universities optimize their real estate by delivering a high-performance space in a highly efficient footprint. These moveable modular solutions can transform underutilized libraries and in-between spaces into covetable destinations.



REGARD
—





Learning is a continuous process, and on today's campuses it extends beyond the classroom to every available space. As active learning increases in and out of the classroom, libraries and other informal learning spaces need to accommodate a broader range of student needs.

The Regard™ furniture system provides a range of spaces to support many modes of learning in informal learning spaces, from individual studying to working in groups or socializing with others.



screen

personal table

alight™ round

CAMPFIRE

big lounge



big lamp



paper table



Campfire products are inspired by simple objects—a park bench, a café umbrella, a bonfire. Each piece was designed from life to bring a smile to your face at work. It's all here, whether you need focus time, team time or me time. The choice is yours. And most of this furniture moves easily, so rearrange it for the big client presentation or to handle extra staff during crunch time, or just because you feel like it.



A NEW ECOSYSTEM

The changes in pedagogies and technologies are rapidly influencing the educational experience. Also changing is our understanding of brain science and the idea that students learn best with access to a range of tools.

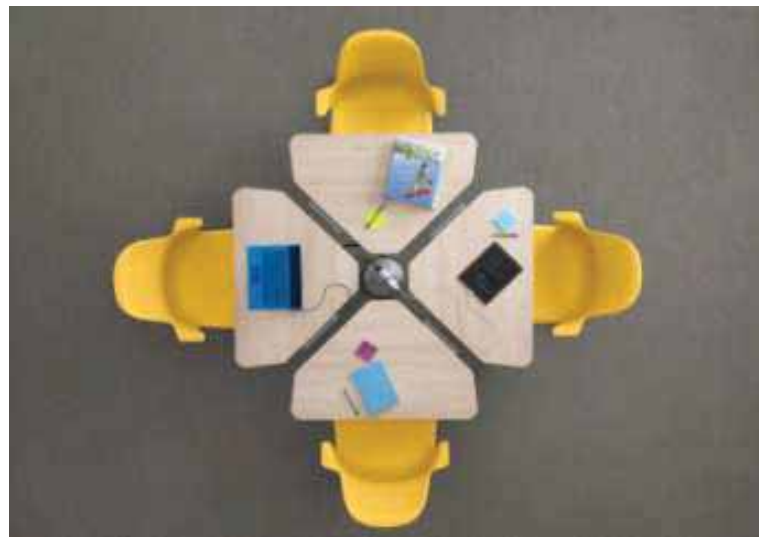
Classroom variety is necessary; within the space, with the shape of space and near the space. Different subjects and teaching methods require different classroom features.

Research suggests that a multi-sensory approach to teaching and learning has been shown to increase engagement, promote deeper participation, maximize student achievement and elevate the idea that learning is fun. Steelcase research and others suggests that active learning, engagement and interaction is a more effective way to learn than passive learning. However, as institutions adopt the constructivists learning theory, they still find themselves limited by the classroom environments designed for lecture-based instruction density issues.

Every seat is the best seat; access to content, student and instructors is available for all.



CLASSROOM DESKS



VERB



The Verb™ classroom collection supports a range of learning and teaching styles. Simple mobility and reconfiguration allow students and educators to shift from mode to mode, interact with content, connect to power sources and collaborate with each other seamlessly. With the freedom provided by Verb, active learning can thrive—inspiring students to be motivated, creative and engaged.



AKIRA





Akira is the high-performance multipurpose table for active spaces. With its one-handed folding lever, it easily folds and nests. One person can set it up, take it down, move it and completely store Akira with minimal effort. A swivel mechanism allows the table to rotate on its axis and infinitely nest in a straight line; the legs pirouette to their nesting position automatically.





GROUPWORK





Collaboration is the basis for Groupwork®, a system that provides a full suite of smart, affordable meeting solutions. Endlessly configurable and easily adaptable, Groupwork tables and visual worktools promote open thinking from project rooms to café spaces, and anywhere in between. Groupwork accommodates open plan and enclosed work environments with a variety of table shapes and heights. Clean and purposeful, Groupwork creates new ways to collaborate while complementing your overall design aesthetic with a wider range of laminate selections than ever before



TASK SEATING

AMIA

Amia® is a hardworking task chair designed to handle long hours of serious sitting. With fully upholstered back and arms, Amia brings an element of sophistication to any workspace. That nice flex you feel when you lean against the Amia chair's backrest is the LiveLumbar™ technology inside. Different than a typical lumbar "cushion", LiveLumbar is a system of flexors that move with your back for consistent, dynamic support. Two handles on the chair's backrest let you slide the LiveLumbar to the ideal position for you. You may not see it, but you'll certainly feel it. As you sit in the chair, an adjustable LiveLumbar zone flexes with your every move, for consistent ergonomic support for your lower back. Hour after hour, day after day.

The Amia chair was designed by the Steelcase Design Studio, in collaboration with industrial designer, Thomas Overthun of IDEO. From the start, the team wanted a simple and friendly image for the Amia chair.



THINK



The Think chair was first introduced in 2004, designed for the growing trend of mobile workers and their unique needs. A decade later, we are more mobile than ever. It's not a fleeting trend. Mobility not only impacts the way we work, but also the way we sit. Today's workplace demands a chair that is smart enough to respond to the needs of the user and simple enough to customize comfort. We have redesigned and re-engineered this global best seller to excel in today's mobile world. It's advanced technology supports work anywhere and everywhere.

The Think chair easily supports all types of work, from collaborative group work to focused work. Available as seated and stool height, Think is smart enough to support both impromptu collaborative work, or an all day sit needed for focused work. It intuitively adjusts as a user moves, allowing them to get to work faster. Think easily creates maximum customized comfort with a minimal number of adjustments. The Integrated LiveBack System, combines a flexible back frame, linked flexors and dual-energy lumbar to intuitively sense and respond to user's needs.

GESTURE

To better understand the body at work, Steelcase conducted a global posture study spanning six continents and more than 2,000 participants. We discovered that changes in technology and behavior have led to new unhealthy postures that are not adequately supported by current seating solutions. While technology boosts productivity, it can cause discomfort that disrupts our work, our ability to concentrate and our creativity.

The Gesture 360 arm moves like the human arm, while supporting users in any position. Most people use an average of three devices a day, and Gesture supports movement and healthy postures between devices when interacting with technology.

With 3D LiveBack, Gesture automatically adjusts to mimic natural spine movement, contouring to the user's back in all postures. It is designed as a system of synchronized interfaces, supporting a greater range of postures through the back, the seat and the arms. The placement of the arms toward the back of the chair and the soft seat edges allow for comfortable alternative postures.





FORMAL LEARNING SPACES

To fully capitalize on the benefits of active learning to improve student success, the physical space must support and enhance the pedagogies at work in the classroom. No longer should static furniture designed for the one-way transmission of information be disguised as supportive of an active learning environment.

Some spaces are focused primarily on density demands, while others require a large worksurface and other maximize learning in highly connected and interactive learning environments. Within an institution, a combination of these classrooms supports the varying needs of students and instructors by subject and semester.

When focused on active learning, institutions should consider how flexibility and variety work with pedagogy, technology and space to support how learning happens in today's classrooms.



COLLABORATIVE SEATING



NODE



Today's students desire an active learning environment—expecting more from their classrooms than ever before. They want their surroundings to support co-learning, co-creation and open discussion.

Educators are often faced with a tough choice: promote active learning or organize a classroom to fit as many students as possible. The existing classroom footprint is only so big, and there's not much flexibility. Until now.

The Node™ chair is mobile and flexible. It's designed for quick, easy transitions between room configurations. With Node, a classroom can flex from a lecture-based mode to a team-based mode, and back again, without interruption. Node can take passive space and make it active, supporting individual and team-based learning, even when classroom capacity is important.



SHORTCUT



Shortcut is designed for dynamic, short sits that keep pace in today's environment. We're asked to interact with more people, process information at increasingly greater speeds—and do it all with excellence.



With elbow rests that stay out of the way, you're free to move close to your desk or lean back, knowing your elbows are supported. Shortcut's flexible shell and comfortable seat cushion offer surprising comfort.



COBI





Every part of cobī was designed to flex and adjust to your body. The chair’s top flexing edge lets you comfortably rest your arm on top of the chair—you know, like you’ve tried to do on every chair you’ve ever sat in. The flexing seat encourages you to move and shift, allowing you to sit centered or off to the sides. And the flexing back contours to support any posture your body needs at any given moment.

The cobī chair offers one manual adjustment (seat height). The rest is taken care of for you. The weight activated mechanism naturally puts you in the best position of comfort right from the start. When you first sit in cobī, it senses your center of gravity and adjusts to the position that will put the least amount of stress on your body, while still keeping you properly oriented and supported. When you shift or move, cobī does the same; allowing you to daydream in comfort.

MOVE





As you sit, you move; so Move was designed to adjust and conform to the natural movements of the body. Comfortable and versatile, this lightweight stackable chair offers seating solutions for a wide range of spaces in the workplace.

Pull up Move chairs for an impromptu get together, or set up rows for a presentation. When everyone's gone, conveniently stack chairs 5 high on the floor, or stack up to 10 on the optional dolly.

The Move chair features adaptive bolstering that conforms to the user, providing tailored comfort for each individual. The enhanced inner core system creates ideal comfort for brief durations.

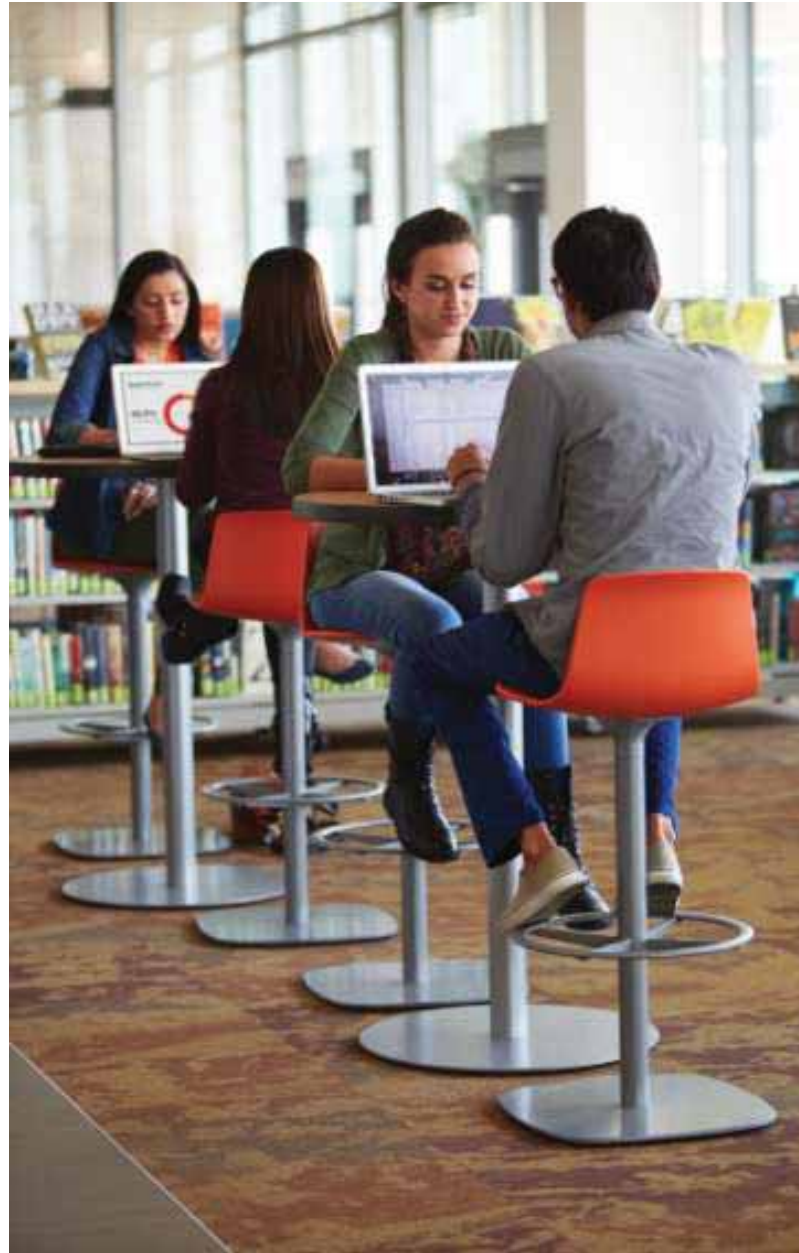


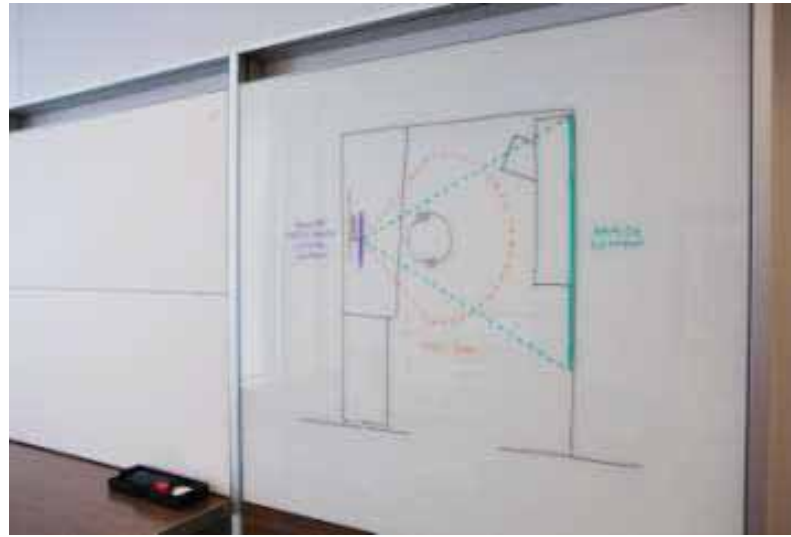
ENEALOTTUS



The Enea collection is as well-engineered as it is beautiful. It is casual furniture for touchdown meeting spaces and cafés.

The Enea seating collection offers a broad statement of line. Stackers and barstools come in arm and armless versions, and the counter stools and barstools can be specified with a back option and footrest.





WHITEBOARDS





ENO





Active learning encourages student involvement in content sharing and knowledge building, leading to greater student engagement, comprehension and ownership of information. The three types of collaboration, informal, evaluative and generative, depend on equal access to analog and digital information as well as the ability for all users to participate in the collaborative process, regardless of where they're located.



EDGE SERIES





Collaborating means sharing information. It means throwing ideas into the mix, or onto the wall. When people work together, innovation happens. Steelcase Premium Whiteboards use vertical space to bring people and ideas together.



TECHNOLOGY



MEDIA:SCAPE





Teams require inviting, high-performance spaces that foster creativity and innovation to encourage meaningful collaboration. By making information integral and meetings more inclusive, the media:scape table amplifies ideas and productivity. With easy access to PUCKs, outlets, and monitors, collaboration is uninterrupted, so teams stay in flow and can build on each others' ideas more swiftly.



By creating a variety of collaborative workspaces throughout an organization's footprint—larger team spaces, more casual impromptu spaces, previously underutilized in-between spaces—media:scape allows team members to accomplish more with others, regardless of their location.

THREAD



Thread™ simplifies power distribution, providing power to the devices we use and the spaces where we learn. Thread's simple kit of parts provide power to any space—whether a classroom, library or in-between space—allowing under-utilized real estate to work harder. Installing Thread is as easy as laying carpet, with modularity that makes it easy to reconfigure. Power can easily be added to new construction or retrofitted into existing spaces.





ABOUT POI

POI Business Interiors is a privately held company that has been providing office, education and healthcare products and services to many of Canada's most respected organizations since 1953. POI was incorporated in 1958, in the Province of Ontario.

In April 2015, POI was once again designated a **Steelcase Platinum Partner**. This prestigious designation recognizes POI's ability to deliver a best-in-class customer experience. Platinum Partners must meet 8 criteria setting high standards for quality of service, performance, customer loyalty and community involvement.

POI was awarded **the Markham Board of Trade Business Excellence Award** in High Quality Products and Service in November 2011.

POI is also the only Canadian distributor to be awarded

Steelcase's Exemplary Performance Award.

This prestigious award is based on our on-going ability to provide exemplary service levels to our mutual clients.

POI is proud to have been named one of **Canada's 50 Best Managed Companies** for four consecutive years.

www.poi.ca



OUR MISSION

POI exists to deliver value to our client partners by creating workplace environments and solutions with a deep commitment to knowledge and unwavering customer support.

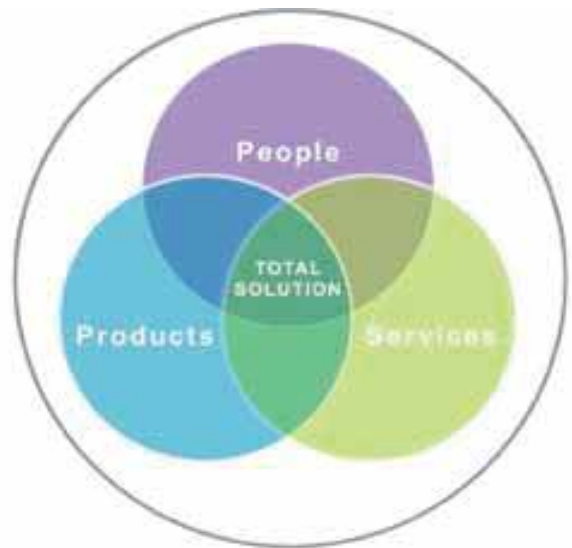
OUR BRAND PROMISE

We create lasting and inspirational experiences for each client wherever work happens.

POI SERVICES

POI exists to deliver value to our client partners by creating workplace environments and solutions with a deep commitment to knowledge and unwavering customer support.

Depending on the specific project, POI allocates the resources required to effectively ensure that the project is a success and that the client is 100% satisfied. We deliver our services with an attitude of personal accountability. Our goal is to make our clients' experience pleasant and cost effective.



POI INTEGRATED SOLUTIONS DELIVERY



Relocation Services

- Walk-Through
- Planning Meetings
- Relocation Change Management
- Technical Services
- Packing and Protection
- Furniture and Furnishings Relocation
- Computer Disconnect & Reconnect Reconfiguration
- AV Technology & Integration**
- System Design
- AV Products & Installation
- Documentation & Integration with Furniture Solutions
- On-going Services Support

Office Furniture Requirements

- Furniture Trade-In
- Rental
- New / Used
- Leasing
- Refreshing**
- Repair & Cleaning Refurbishment
- Refinishing
- Re-upholstery
- Preventative Maintenance Program**
- Cleaning Furniture Electronics, Computers Key Programs
- Art Consultation**
- Supply and Installation

Facilities Decommissioning

- Clean -up
- Disposal
- Brokering / Buy-Back
- Environmentally Friendly
- Distribution
- Warehousing**
- Inventory Development
- Asset Management
- Professional Organizing**
- Office Organizing
- Work Flow
- File Management
- Time Management



INTEGRATED SOLUTIONS DELIVERY AV & TECHNOLOGY INTEGRATION

POI's AV & Technology Integration Group develops and provides innovative products and services for your audio-visual plans and challenges. From boardrooms, to any size of collaborative space, from sound-masking, room reservation technology to installation / pulling of voice + data cabling, our team is available to provide the fully integrated technology and furniture solution that is right for you.



Our team of highly trained technicians has an unparalleled level of knowledge and expertise. They have completed hundreds of custom installations in the commercial, residential and house of worship markets. Recent installations include Seneca College – a totally automated classroom for student / teacher - collaboration; Canadian Newswire – installation of a wireless audio /video /conferencing Boardroom; Budweiser Gardens – a complete retrofit of stadium monitors to allow for digital signage, and One Bloor Condo Project – installation of automation package for Platinum Level Suites.



INTEGRATED SOLUTIONS DELIVERY

POI STUDIO

POI Studio is a team of professionals trained to provide creative workplace solutions to your organization. This team utilizes the latest technology for specification accuracy, rendering capabilities, communication and collaboration. They are experts at working with you and any consultants you engage to:

- Optimize your real estate
- Develop work settings that link your organization's people with their space, technology and work styles
- Assist in the visualization of the optimal workplace with renderings, product images, finish samples
- Recommend finishes for furniture and the physical space



Our interior designers are qualified members of the provincially recognized association "ARIDO" (Association of Registered Interior Designers of Ontario) and the national organization, "IDC" (Interior Designers of Canada). They are BCIN certified in the province of Ontario and many are LEED accredited (LEED AP).

Our technical specialists provide a diverse range of assistance to our clients, and interior designers and architects to ensure all furniture projects proceed accurately and in a timely manner.

Their primary role is product and specification expertise that includes:

Furniture inventory and re-application
 Furniture specifications
 Photorealistic renderings
 Plan and specification review

Installation drawings
 Furniture Standards Manuals
 Product information and Resource

We are specialists in the contract furniture industry and offer you innovative planning solutions.



INTEGRATED SOLUTIONS DELIVERY RELOCATION MOVE MANAGEMENT

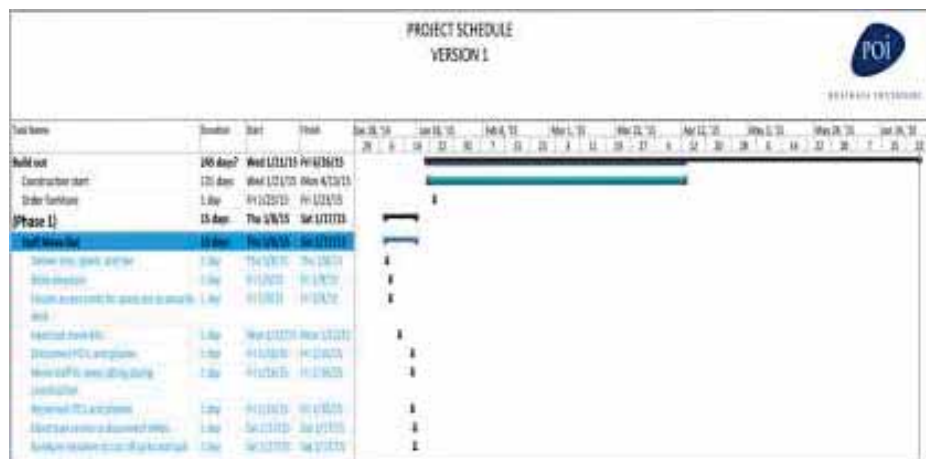
The **Relocation Move Management Team** understands that office moves are time consuming to plan, and have an impact on the company's productivity if not managed correctly.

We take full ownership, making your move seamless.

POI has been providing office furniture, architectural products and related services since 1953. We have extensive experience in all aspects of relocation and change management.

POI takes a holistic approach when it comes to relocation move management by examining all factors that may affect the outcome.

We make it our goal to understand you and your business objectives so that we can tailor our services to meet and exceed your specific needs and expectations.



Our Relocation Managers:

- have experience providing a full range of relocation services to a wide variety of customers, large and small
- have excellent organizational skills, and are personable, detail-focused individuals
- care about doing a good job, and want to ensure that your relocation is efficient, effective, smooth and stress free for you
- have design and facilities backgrounds, so we possess in-depth knowledge of planning, design, construction, information technology, building codes, project scheduling, and sustainable principles and practices
- are proficient with current release software for Microsoft Project, AutoCAD, Word, Excel, PowerPoint
- have the necessary people skills to coordinate contractors, trades, and the various members of the Move Team
- understand budgets, and we know that doing it right the first time always saves you money



INTEGRATED SOLUTIONS DELIVERY MOVE SERVICES

THE POI DIFFERENCE

When POI began offering complete relocation and facilities services to the market place, we knew we would be different than the rest of the traditional move industry. In addition, we wanted to be the best solution in the market place for your total relocation needs. Over the last 10 years this part of POI's business has grown substantially but more importantly we have set new standards of excellence in the commercial relocation business.

The planning we start with, the tools and processes we use, the breadth of services we offer linked with the quality of our team and leadership in the field make us the right solution for your relocation needs. This applies whether the project is a large or small project, whether it is moving across the hall, across the street or to a new city.

SERVICE OFFERING

- Planning
- Packing/Unpacking Services
- Content Relocations
- Ergo Crates: Unique packing tool
- Move Supplies
- Furniture Relocations/Reconfigurations (all major manufacturers)
- Technology Relocations
- Disconnect/Reconnect of Technology
- Long Distance Shipping
- Furniture Refreshing/Repairs
- Facilities Decommissioning/E-waste
- Asset Management/Storage
- Ongoing Preventative Maintenance
- Warehouse Moves Including Racking





INTEGRATED SOLUTIONS DELIVERY ARCHITECTURAL SOLUTIONS

POI is committed to providing you the best interior architectural products solutions in the industry. Architectural Solutions include moveable walls, access floors, modular power and cabling, and acoustic solutions. These products provide a superior alternative to traditional construction that's simpler to build, easier to change, more environmentally responsible and much more cost-effective.

In response to the growing demand for these unique products, POI expanded the team to include:

- Architectural Solutions Team Leader
- Architectural Product Specialist
- Jr. Architectural Solution Specialist
- Sr. Technical Designer
- AS Project Manager

The Architectural Product Specialist will work with you to gain understanding of your requirements and will provide product recommendations tailored to your unique building envelope. Working with the Technical Designer, a best possible solution will be developed – from initial thought starters to final shop drawings.

POI's AS Project Manager, working with the end user and contractor, manages our architectural products business with a high level of site involvement pre and post order to ensure flawless project installs.



POI BUSINESS INTERIORS

www.poi.ca

HEAD OFFICE & SHOWROOM

120 Valleywood Drive Markham, Ontario L3R 6A7

Phone: 905.479.1123

Toll Free: 888.296.9967

Fax: 905.479.6941

WESTERN ONTARIO OFFICE & SHOWROOM

201 Queens Avenue

London, Ontario N6A 1J1

Phone: 519.455.0056

Fax: 519.951.1004

KITCHENER / WATERLOO / GOLDEN HORSESHOE SHOWROOM

(by appointment)

180 Northfield Drive West, Unit 2

Waterloo, Ontario N2V 1K4

Phone: 519.279.6858

NORTHERN ONTARIO OFFICES & SHOWROOMS

361 King Street, Unit 4

Barrie, Ontario L4N 6B5

Phone: 705.735.1234

Fax: 705.735.2345

677 MacDonald Avenue, Suite 215

Sault Ste. Marie, Ontario P6B 1J4

Phone: 705.910.6602

PRODUCT DISTRIBUTION CENTRE

1 Steelcase Road West, Unit #2

Markham, Ontario L3R 0T3

Phone: 905.946.3471

Fax: 905.946.3489



BUSINESS INTERIORS